



My Connection with the Trinity River: The Rebecca Rasor Story

Rebecca Rasor is the Managing Director for the Trinity River Corridor Project and has been working closely with the public and private sector to enhance the beauty of the Trinity River.



Rebecca Rasor

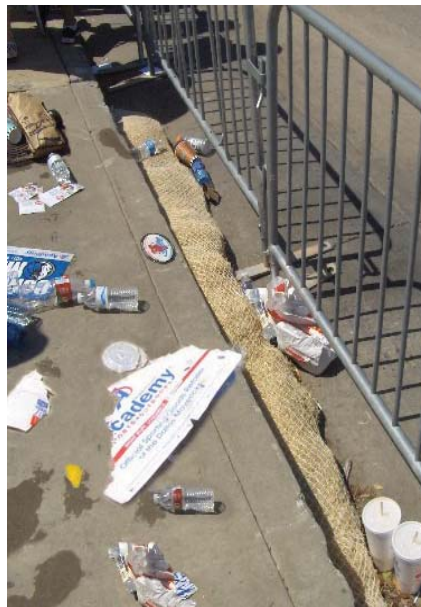
The MAVnificent Effort On the Court and on the Streets

Stormwater Management is proud of the Dallas Mavericks for becoming the 2011 NBA Champions.

When Stormwater Management heard about the victory parade, we wanted to participate in a green way. We decided that we would mark all of the storm drain inlets along the parade route and around Victory Park. The permanent marker reminds citizens that stormwater is **not** treated and the storm drain inlets are not trash cans. We marked 65 storm drain inlets before the victory parade.

However, we know when Dallas has a celebration; it is going to be BIG! So the Stormwater staff decided that the markers were not enough. We also installed biodegradable rolls along the curb line at each inlet to protect the storm system from trash and other parade related debris that would eventually end up in the Trinity River.

After the parade, the streets were cleaned and the inlet protection devices removed. **In one day, Stormwater Management's efforts prevented 9 tons of trash from entering the storm drainage system.** Now that is really worth celebrating!



Way to Go, Mavs! Way to Go, Stormwater!

What is your connection to the Trinity River? Currently, I am the Managing Director of the Trinity River Corridor Project, so my job is to make the Trinity River a place where people want to visit and enjoy. But before that, I spent 15 years with Dallas Water Utilities where I worked in the area of wastewater treatment. The treated wastewater is discharged into the Trinity River, so I helped to make the river cleaner.

What do you think of when you hear someone say, "the Trinity River?" It's been a big part of my life for 27 years. I've done my best to take care of it and make it better for the next generations.

In your experience, what are people's reactions to spending part of their day on the Trinity River? Unfortunately, not so good. There is a perception that the Trinity River smells bad or is polluted. However, most people have never been down to the river to discover the truth; it can be a beautiful place filled with wildlife, great tall trees, and diverse plants.

Continued on page 2

This Issue:	<i>MAVnificent (page 1)</i>	<i>Grasscycling (page 2)</i>	<i>Just For Kids (page 3)</i>
	<i>R. Rasor Story (page 1)</i>	<i>Ask Trinity Trudy (page 3)</i>	<i>Back to School Fair (page 4)</i>
	<i>Pet Dilemma (page 2)</i>	<i>Upcoming Events (page 3)</i>	<i>Stormwater Member (page 4)</i>

R. Razor Story *Cont. from page 1*

How have you seen the Trinity River change during your time on it?

The Trinity River is much cleaner than when I began work with the City in 1984. Also, there is much more of a focus to make the river a better place rather than ignoring it.

What do you want people to know about the Trinity River?

I want people to know that the Trinity River is one of Dallas' greatest natural resources and it is up to all of us to make it cleaner, accessible, and a centerpiece for Dallas.

What do you want the citizens of Dallas and North Central Texas to know about the Trinity River Corridor Project?

I would ask the citizens to be patient about the Trinity River Corridor Project. It will take a long time to complete. But, I also want them to know about the many opportunities that have been created by the Trinity River Corridor Project that are out there now. The Trinity River Audubon Center has been open since 2008. There are over 10 miles of trails in the Great Trinity Forest. The magnificent Margaret Hunt Hill Bridge is about to be finished. And, there are many more components of the Trinity River that are underway or about to get started, like the **3rd Annual Trinity River Photo Contest**. This is an opportunity for you to share your beautiful adventures within the Trinity River Corridor. Entries are accepted from June 15 to October 15. For more information, visit www.trinityrivercorridor.com. We need to keep the momentum going and the reward will be a fabulous attraction that we can all be proud of.

This is a continuation in a series of articles that features Dallasites and their connections to the Trinity River. If you or someone you know wants to be considered as an interview subject in this series, contact us at 214.948.4022 or email stormwater@dallascityhall.com.

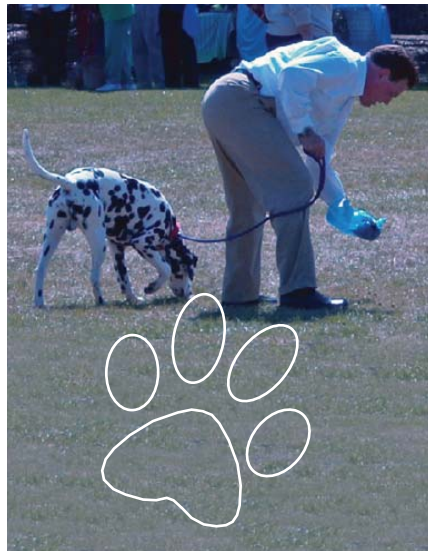


Grasscycling

Did you know there is a way to “green” up your lawn and save money while doing it? It's called Grasscycling.

Grasscycling is the practice of recycling grass clipping by leaving them on the lawn after mowing. Grass clippings are 75-85 percent water and break down quickly returning their nutrients back to the lawn. One of the nutrients is nitrogen which is especially important to stimulate large healthy populations of beneficial bacterial organisms. When done properly, clippings

Pet Dilemma



There is nothing like going out to get the mail and finding those “special” little packages that our pets leave for us in the yard. Many people choose to leave those packages on the lawn, but here are a few reasons not to.

Some believe that pet waste is a natural fertilizer, actually it's not. Pet waste contains high concentrations of nitrogen and phosphates. While both of these nutrients are found in fertilizers, high concentrations can kill the grass. Pet waste also contains disease-causing organisms like bacteria, viruses, and parasites that can be harmful to humans, pets, and other animals.

quickly decompose and return the nutrients to the soil naturally. Not only does it make caring for your lawn easier, but it can also reduce your lawn maintenance time by 50 percent because you don't have to pick up afterwards. Leaving clippings on the lawn slows water loss through evaporation, helps keep the soil temperature cooler, and reduces the needs for fertilization.

Following these simple tips will help maximize the advantages of grasscycling.

- Remove no more than one-third of the leaf surface area with each mowing.
- Use a sharp mower blade.
- Mow when the lawn is dry.
- Aerate your lawn.
- Water thoroughly when needed.
- Make sure you follow the local lawn watering schedules.

One of the concerns of grasscycling is grass smothering. Grass smothering occurs when

There is yet a third reason to clean up after our pets, it is City Code. The Pooper Scooper Law (Dallas City Code, Sec 7-4.8) requires owners to pick up after their pet if it defecates on public or private property that is not their own. It also requires that pet owners carry some type of sanitary device with them to pick up after their pet.

So, how does this effect stormwater? Well, it is simple. If the pet waste is left in the yard when it rains, the stormwater will carry it to the nearest storm drain inlet, and then to the nearest water body. Once in the water body, much like on our lawns, the pet waste will break down releasing the nutrients, and the disease causing organisms. These nutrients and organisms can cause harm to the aquatic life in the water as well as the water quality which affects recreational areas.

As an added measure to protect our water bodies, Stormwater Management recommends that pet owners pick up their pet's waste from their own lawn at least once a week.

The next time you walk your dog, remember scoop your dog's poop. Your friend, neighbors, and Stormwater Management thank you!

hay like grass builds up on top of the freshly mowed lawn. When grasscycling is done correctly and only a third of the surface area of the leaf is removed, grass smothering will not occur.

There is also a long held belief that leaving grass clipping on the lawn causes “thatch;” this is simply not true. “Thatch” is not made up of grass clippings. It is layers of roots, leaf sheaths, and rhizomes that prevent water and fertilizers from penetrating into the soil. Proper grasscycling will not cause “thatch.”

Recycling grass clippings is a simple and easy opportunity for every homeowner to do something good for the environment. Grasscycling is a responsible environmental practice and an opportunity for all homeowners to reduce their waste and protect local streams, rivers, and lakes from yardwaste.

Don't forget the best part; Grasscycling takes less time and energy than bagging and dragging the grass clipping to the curb.

JUST FOR KIDS

big and small



**ASK ME,
TRINITY
TRUDY**

I would like to help keep the stormwater in my neighborhood clean and spread the stormwater message to my neighbors. Does Stormwater Management have any volunteer programs in which I can participate?

Great Question! Yes, Stormwater Management has two volunteer programs. The programs are Texas Stream Team and Storm Drain Marking.

Texas Stream Team is a network of trained volunteers and supportive partners working together to gather information about the water quality of the natural water resources of Texas. This information is available to all Texans. Established in 1991, Texas Stream Team is administered through a cooperative partnership between Texas State University, the City of Dallas, Texas Commission on Environmental Quality (TCEQ), and the U.S. Environmental Protection Agency (EPA). Currently, over 1,400 Texas Stream Team volunteers collect water quality data on lakes, rivers, streams, wetlands, bays, bayous, and estuaries in Texas.



The **Storm Drain Marking Program** is a quick, easy, and fun project for volunteers. The project involves installing permanent placards that read, “**Do Not Dump, Drains to Creek**” on the storm drain inlets in your neighborhood. The program is ideal for all types of groups such as homeowners associations, Boy/Girl Scout troops, and social clubs. Storm drains lead to our creeks, rivers, and lakes. We need your help to install drain markers to remind all Dallas citizens not to pollute the storm drain system.

Both programs are a great way to spread the message of stormwater pollution prevention.

For more information on these volunteer programs, contact the Stormwater Management Section’s Outreach Team at stormwater@dallascityhall.com.

Circletown

Pat and Sandy are friends. Usually Sandy walks to Pat’s house, but today Sandy will be driven to Pat’s house. The map shows where they live. Find a route so that Sandy can visit Pat. The route must start at Sandy’s house and end at Pat’s house, and you have to follow the rules.

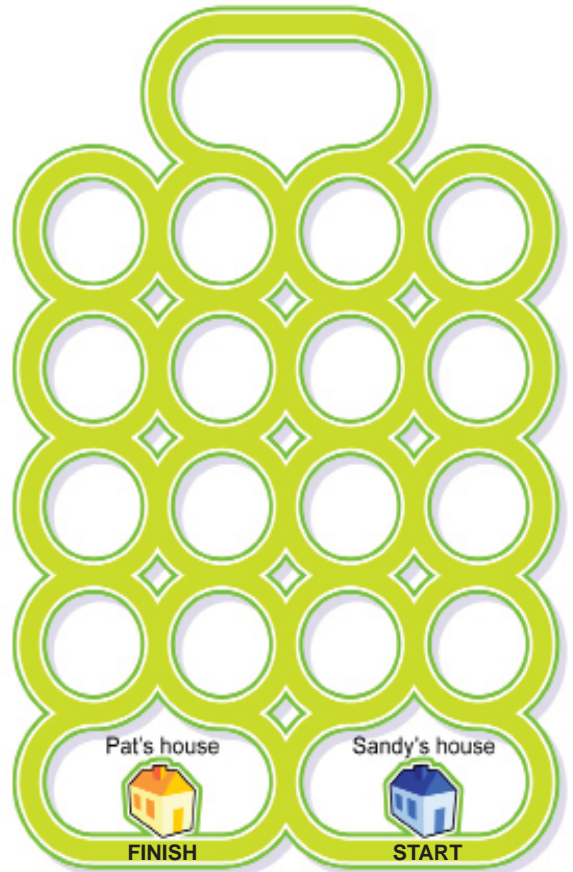
This is a map of Circletown. Almost all of the roads in Circletown are circles. When you drive along a road in Circletown, you are not allowed to do a U-turn, and you are not allowed to do a really sharp turn (the left topmost diagram). Only smooth turns are allowed (the left bottom diagram).



No sharp turns or U-turns



Smooth turns are allowed



Answer Key:

The solution is shown at left. It’s necessary for Sandy to go through the loop at top of the puzzle.

Tips & Drops

Upcoming Events

September

- 5** Labor Day
- 10** Fall Water Wise Landscape Seminars @ Mountain View College www.savedallaswater.com
- 10 - 11** Dallas Home and Garden Show @ Dallas Market Hall www.thehomeandgardenmarket.com
- 24** Dallas Green Festival @ Texas Discovery Gardens www.texashomeandgarden.com
- 30 - 10/23** Texas State Fair @ Fair Park www.bigtex.com

If you have a stormwater question for Trinity Trudy, email her at stormwater@dallascityhall.com. Look for her responses in future issues of “Inside the Inlet.”

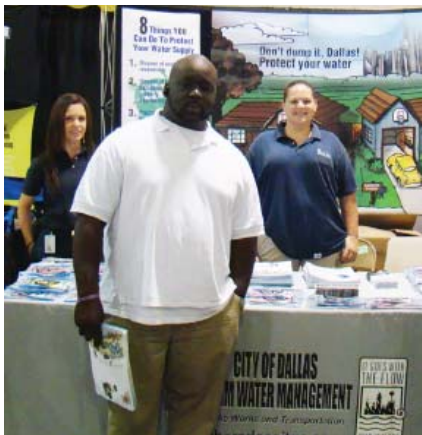
The MAYOR'S BACK TO SCHOOL

FAIR

The Mayor's "Back-to-School" Fair is an annual event that is highly anticipated by students, parents, and the many sponsors who make this event possible.

The students and parents look forward to the haircuts, dental checkups, entertainment, school supplies and much more. The sponsors are excited to provide the students and their families with supplies and services needed for a great school year.

Stormwater Management also partakes in the excitement of this annual event. It is an opportunity to share the stormwater pollution prevention message with students and their families while also equipping them with school supplies.



Leslye Mohon, Harry Christle, and Sara Ziegenfuss

This year, over 5,000 families visited the Stormwater Management booth. They received stormwater educational materials and a notebook pouch filled with a pencil, pen, eraser, sharpener, and ruler. All of the items inside the notebook pouch, as well as the pouch itself, carried the stormwater message.

The stormwater pollution prevention message will follow the students to school each day and serve as a reminder that stormwater drains to our local lakes, creeks, and rivers **untreated**.

The students' academic education along with their newly acquired stormwater awareness will prepare them for greatness this school year and for years to come.

HAVE A GREAT SCHOOL YEAR, STUDENTS!

Enforcement Activities

Stormwater Management conducts construction site inspections and offers education to site operators to...

- Promote stormwater compliance with the Clean Water Act
- Correct and modify behavior
- Enhance water quality

If after inspections and education, sites remain non-compliant, Stormwater's Enforcement team issues Notice of Violations (NOVs) and Citations. Outside complaints will also be filed by the City Attorney. These complaints have associated fines and penalties up to \$2000 per violation if the sites are not brought into compliance.

The adjacent table lists some of Stormwater's pending enforcement settlements.

If you see any violations, please call 311.

Meet a Member of the Stormwater Family



Kriste Felts

Kriste Felts joined the City of Dallas Stormwater Management team in June 2010 as an Environmental Specialist on the Construction Compliance Team.

Her primary responsibilities include inspecting construction sites to ensure stormwater compliance with local regulations. During her inspections, she looks for conditions on the construction site like loose dirt or improperly stored chemicals that could impact the storm drain system. She also reviews the site's Stormwater Pollution Prevention Plan (SWPPP) which tells her how the site operator plans to prevent stormwater pollution.

In addition to her primary responsibilities, Kriste also assists in the on-the-job training of new employees. She was recently selected to educate the department's new Assistant Director on the "Stormwater" inspection process used by the Construction Compliance Team.

When she is not working, Kriste likes to play softball and go fishing on the weekends. She also enjoys spending time with her niece every chance she gets.

Welcome to the Stormwater family, Kriste.

Enforcement Results

Projects	Violations	Fines
Prichard Lane and Wheatland Road Construction	• BMPs • Permitting Issues • Stabilization Issues	\$3,500
Stony Ford	• Illicit Discharge	\$600+ CC*
Eagle Ford Drive	• BMPs	\$1,500 + CC*
R. L. Thorton	• BMPs	Pending (\$2,000 +CC*)
Rhodes Road	• BMPs • Stabilization Issues	Pending

* Court Cost

City of Dallas Stormwater Outreach Leadership

Kelly High
Director
Trinity Watershed Management

Rebecca Rasor, P.E.
Assistant Director
Trinity Watershed Management

Susan Alvarez, P.E.
Senior Program Manager

Hazel Roper, SPHR
Program Support and
Outreach Manager

Sonya Batts
Outreach Program Coordinator

FYI Readers:

Stormwater Management is here to serve and meet the needs of our valued readers. For additional information regarding the following:

- General stormwater information
- Construction and Industrial workshops
- Presentations about stormwater pollution prevention or permitting requirements

Contact us at:

Stormwater Management
320 E. Jefferson Blvd., Room 108
Dallas, TX 75203
214-948-4022 (phone)
214-948-4076 (fax)
stormwater@dallascityhall.com
www.wheredoesitgo.com

